



15 Ryedale Street , Middlesbrough, TS3 6PF

£550

 3  1  2  D



15 Ryedale Street

, Middlesbrough, TS3 6PF

£550



HALLWAY

Step inside through a crisp white UPVC double-glazed door and you're greeted by a sunlit hallway. Natural light pours in, illuminating the space and drawing your eye toward the inviting reception and dining area ahead, as well as the staircase leading up to the first floor.

RECEPTION/ DINING ROOM

At the front of the room, the living area offers enough space for a comfortable two-piece suite, along with a few thoughtfully placed storage units. Natural light streams in through a large UPVC double glazed window, and a radiator keeps the space warm and inviting. Toward the rear, the dining area easily accommodates a dining table and your choice of storage pieces. This section also features a UPVC double glazed window for plenty of daylight, another radiator for consistent warmth, and a doorway that leads directly into the kitchen, making it easy to transition between dining and meal preparation.

KITCHEN

The kitchen features a generous selection of light wood-effect cabinets, including wall-mounted cupboards, base units, and deep

drawers, all offering plenty of storage for cookware and essentials. Rich, dark countertops provide a striking contrast to the lighter cabinetry, adding depth and visual interest to the space. There's ample room for free-standing appliances, allowing flexibility in layout and design. A large UPVC double glazed window lets in natural light, brightening the room and giving it an airy feel. The kitchen also offers direct access to the bathroom, making it a practical and convenient hub within the home.

BATHROOM

The bathroom can be found on the ground floor, featuring a classic three-piece suite with a paneled bathtub perfect for soaking, a hand basin, and a low-level toilet. Natural light filters softly through a frosted UPVC double-glazed window, ensuring privacy while brightening the space. A radiator keeps the room comfortably warm, making it inviting year-round.

LANDING

The landing gains access to the two spacious bedrooms.

BEDROOM ONE

The first bedroom sits at the front of the house,

welcoming in plenty of natural light through a large UPVC double glazed window. There's ample space for a double bed, along with generous room for sizable wardrobes or other storage options. A radiator under the window keeps the room cozy year-round, making it a comfortable and practical retreat.

BEDROOM TWO

Tucked away at the back of the property, the second bedroom offers a quiet retreat with enough room for a cozy double bed and compact storage solutions. A UPVC double glazed window lets in natural light while keeping things peaceful, and a radiator ensures the space stays warm. This bedroom also provides direct access to the third bedroom.

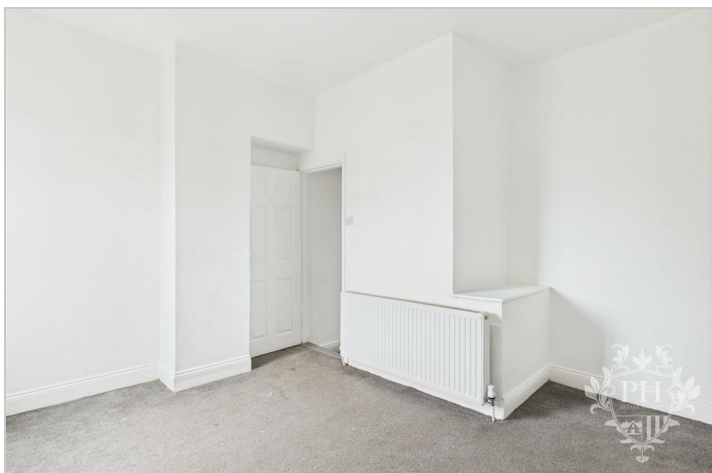
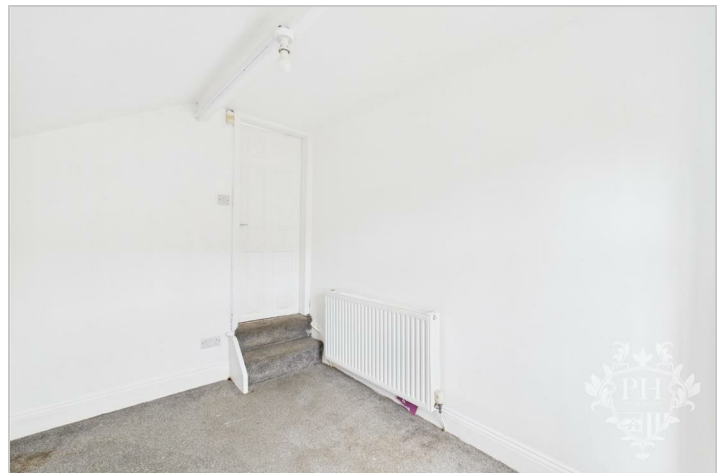
BEDROOM THREE

To reach the third bedroom, you pass through

bedroom two. This cozy space is well-suited for a single bed and features compact storage options, making it ideal for a child or guest. Natural light filters in through a UPVC double glazed window, and a radiator keeps the room warm throughout the year.

EXTERNAL

This property features convenient on-street parking at the front, while the rear offers a secure, enclosed yard—perfect for relaxing or keeping pets safe. It's ideally situated just a few minutes' walk from shops, cafes, and essential amenities, with bus stops nearby for easy access to public transport.



Road Map



Hybrid Map



Terrain Map



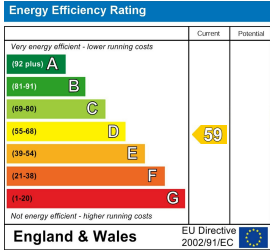
Floor Plan



Viewing

Please contact our Middlesbrough Office on 01642 462153 if you wish to arrange a viewing appointment for this property or require further information.

Energy Efficiency Graph



These particulars, whilst believed to be accurate are set out as a general outline only for guidance and do not constitute any part of an offer or contract. Intending purchasers should not rely on them as statements of representation of fact, but must satisfy themselves by inspection or otherwise as to their accuracy. No person in this firms employment has the authority to make or give any representation or warranty in respect of the property.